

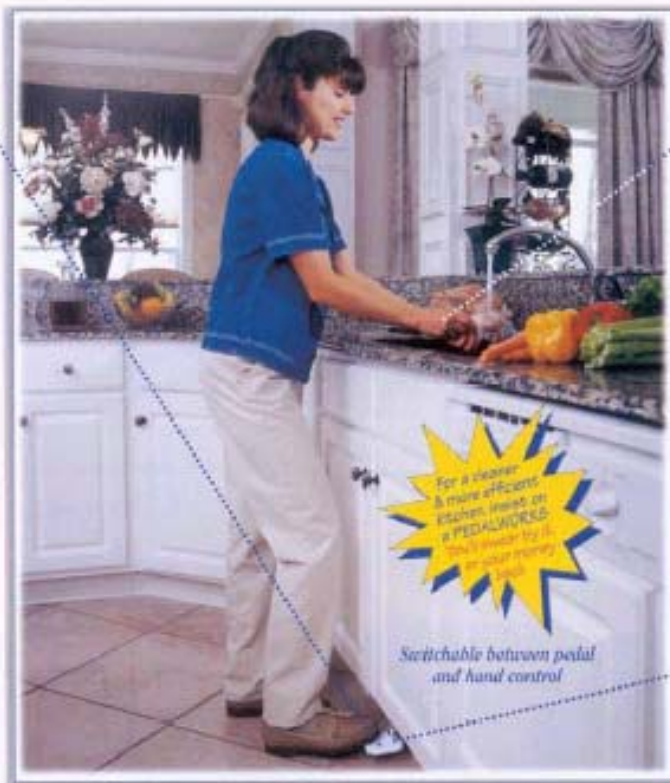
STEP ON & OFF THE PEDAL
instead of leaving the water on
(saves mega gallons of water)

LOWERS UTILITY BILLS
and helps the environment!

Works like a single lever faucet
BUT IT'S HANDS-FREE!

CONNECTS TO AND CONTROLS ANY FAUCET
(New or Existing)

A BEAUTIFUL ADDITION FOR TODAY'S DEMANDING KITCHENS
Also great for baths, utility rooms and workshops



NO MORE MESSY HANDS TOUCHING CLEAN FAUCETS!

INCREDIBLY CONVENIENT
You'll wonder how you ever lived without it!

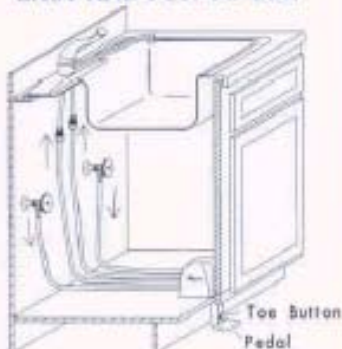
KITCHEN TASKS BECOME QUICKER AND EASIER
Washing vegetables, making coffee, working while on the phone or holding a child, and more

HEAVY WEIGHT CONSTRUCTION
Also used in commercial kitchens

DESIGNER CHOICES

See color selection charts for finishes and model #s

EASY AND FUN TO USE



- With faucet open to any desired temperature, step on and off the pedal to control flow.
- Pushing the toe button in will latch the pedal in an open position for constant flow.
- With toe button pushed in, traditional hand control is activated.
- Close faucet handles to deactivate pedal use.



Comes complete with everything needed for installation in sink base cabinets with any sink or any faucet.

Complies with ASME A112.18.1M



Pedal Valves, Inc., Luling, Louisiana

985-785-9997

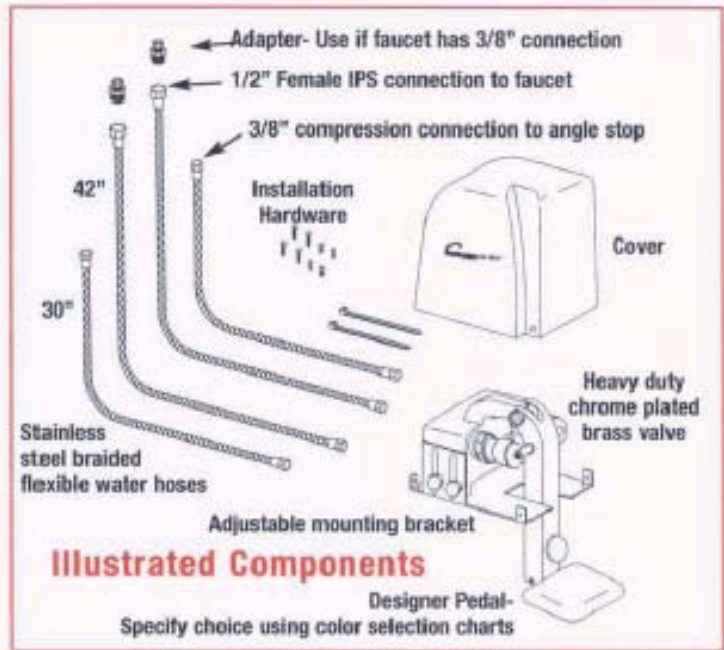
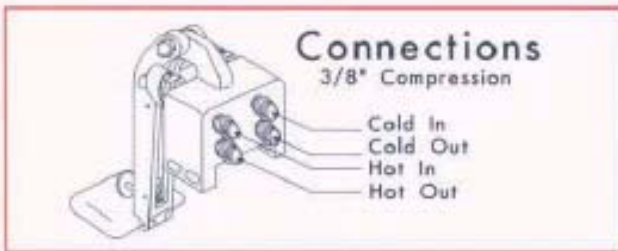
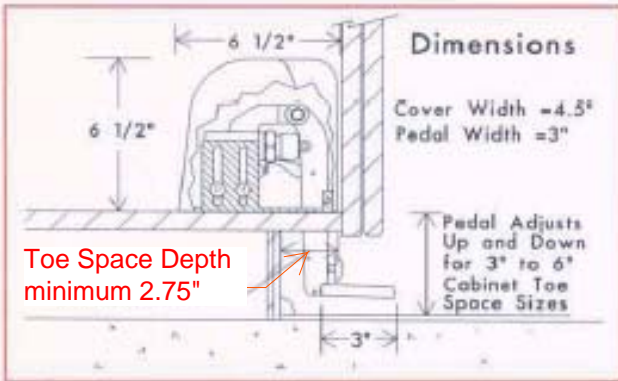
Fax: 985-785-0082

Toll Free: 1-800-431-3668

Website: www.pedalvalve.com

E-mail: pvi@pedalvalve.com

Patent #5,386,600



EASY INSTALLATION

Complete step by step instructions included in Owners Manual

